

INSTRUMENT APPROACH CHART **AERODROME ELEV 4457'**
 HEIGHTS RELATED TO **THR RWY 02 - ELEV 4413'**

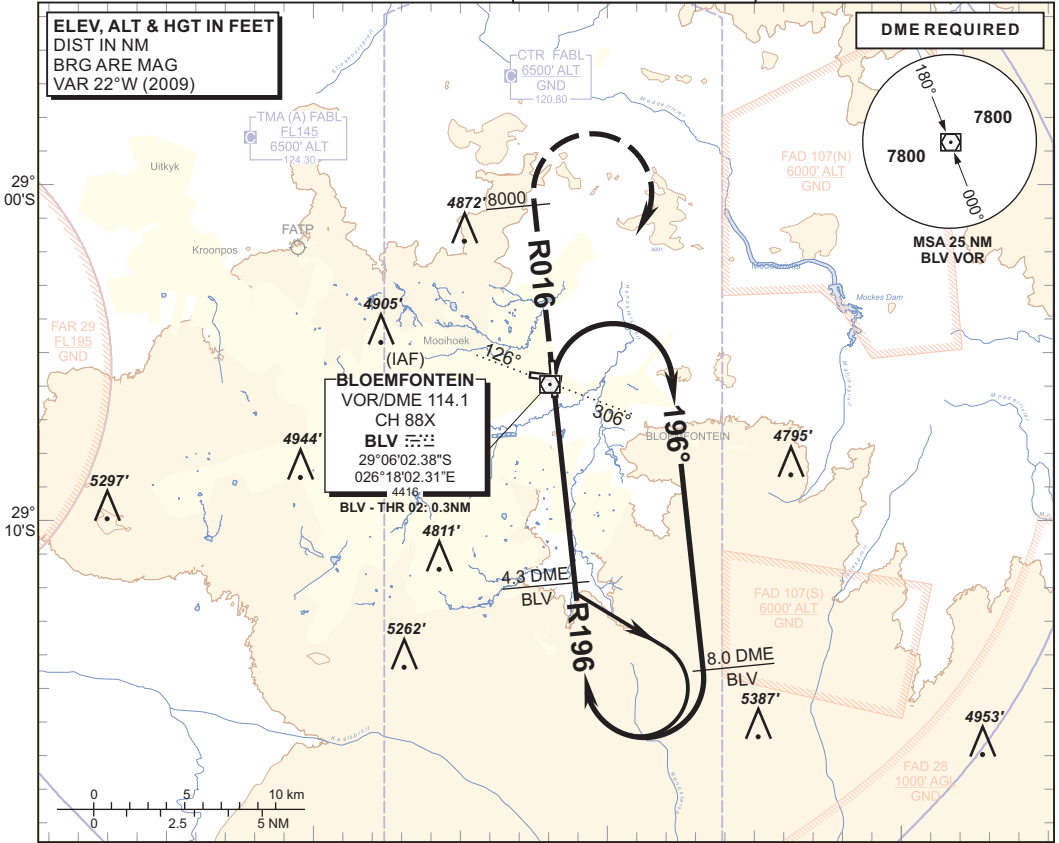
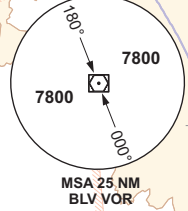
ATIS 126.45
 TWR 120.80
 APP 124.30



BLOEMFONTEIN
 (BRAM FISCHER INTL)
VOR RWY 02
 CAT A - D

ELEV, ALT & HGT IN FEET
 DIST IN NM
 BRG ARE MAG
 VAR 22°W (2009)

DMR REQUIRED



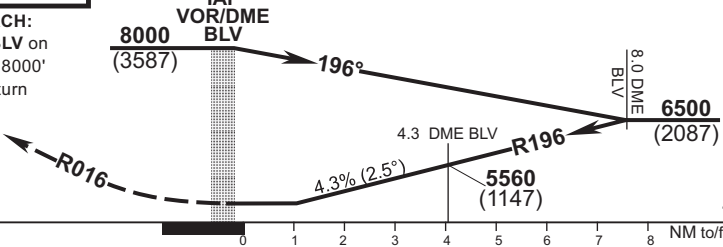
DIST to RWY 02	6	5	4	3		
ALT (HGT)	5980 (1567)	5710 (1297)	5450 (1037)	5190 (777)		

TRANSITION ALT 8000
TRANSITION LEVEL ATC

INA ALT: 8000

MISSED APPROACH:

Track away from BLV on R016 and climb to 8000' ALT. At 8000' ALT turn right and return to BLV.



THR ELEV 4413

CHANGE: BLV Coordinates

					GS	KT	80	100	120	140	160
					8.0 DME BLV - THR	M:S	5:47	4:38	3:52	3:19	2:54
					Rate of descent	FPM	352	440	528	616	703
					NOTE:						
					1. Procedure turn approach applicable only within 30° of the outbound heading. Use phraseology "Request procedure turn approach".						
OCA (H)		A	B	C	D						
Straight-in Approach		VOR/DME	5070 (657)	5070 (657)	5070 (657)	5070 (657)					
Circling		Circle to land at the discretion of the pilot in command.									